

The Sir Bernard Lovell School POST 16 PROSPECTUS 2010

INTRODUCTION

Welcome to our Post-16 evening and prospectus

We hope that the information presented will help you to make the right choices for next year and beyond.

We are delighted with the further improvements in A level results this year. We were also pleased that two thirds of our Post-16 leavers have gone on to higher education. The success of our Post-16 Centre was recognised in the previous Ofsted Report, where the quality of teaching was said to be 'very good'.

The next few years will see a period of rapid change for Post-16 nationally with the development of the new diplomas. We had already anticipated many of the changes by providing a broad core experience, including an emphasis on developing skills needed for progression to employment and higher education and we are very pleased with how well our Year 12 students have settled into their programmes. We are committed to ensuring Post-16 students here receive an education of real quality and develop the academic and social skills needed to play a full part in tomorrow's world. The Sir Bernard Lovell School is at the forefront of educational developments at Post-16 nationwide.

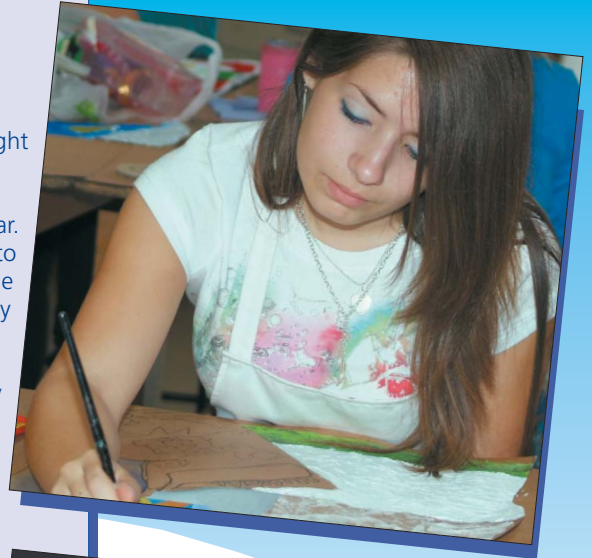
There have been significant developments in the range and quality of the courses on offer and the enhancement of the learning environment. Students in the Post-16 Centre benefit from their own computers. They can develop skills in modern foreign languages and communicate using some of the latest technology. The facilities for Specialist courses have contributed to the exceptional success of the students' work.

Through our links with the five schools and Further Education College in the Kingswood Partnership, students have the opportunity to choose from a large variety of courses.

To maintain a successful and committed learning environment, we accept applications only from GCSE, Diploma and BTEC students who can demonstrate a high level of motivation and commitment to learn, whether at SBL or elsewhere. At this stage we are asking students to indicate their preliminary choices. We can then look at how these can be most effectively timetabled and will publish the blocking pattern shortly after Christmas. It is important to stress that whilst we will make every effort to accommodate students' choices, this is not always possible.

Please complete and return the application form (in the back of this folder) by Friday 27th November 2009. N.B. If you are an SBL student you will be interviewed on the 10th December so your application needs to be completed by then. If you would like an opportunity to talk through Post-16 Education at SBL in more detail please contact Mr Downes or Mr Davey for an appointment.

D Turrell



The Sir Bernard Lovell School
and Language College
Community of Learners



LEVEL 2 COURSES

Students who wish to take a level 2 qualification will be able to choose from a range of over 25 courses across the Kingswood Partnership. Courses offered at SBL include Business Administration and Finance, Creative and Media, Society Health and Development Diplomas. Additional learning courses include Childcare or Media. Students will have the opportunity to complete functional skills in IT, literacy and numeracy. For details of all level 2 courses please see the Kingswood Partnership prospectus.

Level 2 courses are equivalent to 4 GCSE A8 – C passes. A number of students follow a level 2 course and then move on to Level 3 courses, thus studying for three years in total.

To study a level 2 course students will require 5 grades at E or above at GCSE.

A typical one year programme is made up of the following elements:

- A level 2 diploma course
- Functional Skills
- An Extended Project
- Personal Development Curriculum



LEVEL 3 COURSES

Level 3 are advanced level courses. They lead on to Higher Education and a wide variety of training opportunities. Students are able to study either AS levels (leading to A levels in year 13) a diploma at level 3, or a combination of both. Advanced Diplomas offer the combination of theoretical and applied styles of learning and are equivalent to 2.5 or 3.5 A levels. Students on Advanced Diplomas generally study one AS level in addition to their principle learning. For further details see the Kingswood Partnership Prospectus.

Entry requirements: to study level 3 (advanced) courses students should have achieved 4 or more A* – C grades at GCSE. Students achieving under this level are strongly advised to apply for our level 2 programme.

Broad and balanced:

Students achieving mainly A* - B grades should be choosing 4 advanced level courses or a diploma and one other course. It is strongly advised to choose a 'fourth' subject which broadens the programme. For example:

Balanced

Maths, Physics, Chemistry
French, English, Art/Textiles
Health and Social Care, Biology
English, History, Sociology
IT Diploma
Society Health and Development Diploma

Broad

PE
Maths
German
IT
Maths
Sociology

Students achieving mainly B's and C's are advised to choose 3 advanced level courses or a diploma without an additional A level.



THE LEARNING ENVIRONMENT

The school has recently opened a purpose built Post 16 centre with state of the art facilities.

Most Post-16 lessons at SBL take place in specialist Post-16 classrooms in the Post-16 centre. We are extremely proud of our new facilities.

The Post-16 Centre's learning environment is characterised by a purposeful and friendly atmosphere in which students and staff have high expectations and enjoy intellectual challenges.

Post-16 students sign a Learning Contract as a statement of their intent to:

- Complete all work to the best of their ability by the agreed deadlines
- Be punctual and attend all lessons, personal challenge sessions, tutorials and assemblies
- Dress and behave in an appropriate manner

In order to ensure students can follow a wide range of course options, some classes might take place after 3.15 pm: the Post-16 centre is effectively open for tuition from 8.45 am to 5.00 pm.

All students have non time-tabled lessons. These are for independent study, research, and reading to support the work in class.

Students have access within the new Post-16 centre to a private study area and computers.

We operate a tutorial system in the Centre and students are required to account for absence.

ADVICE ON CHOOSING COURSES

- Make sure you come to post-16 sample lessons to find out what classes are like.
- Find out what the courses involve by talking to A level teachers and students.
- Choose subjects you enjoy and will motivate you to work hard.
- Choose a combination of subjects which will keep your options open (*Your tutor and Post-16 staff will help you with this*).

THE POST-16 CURRICULUM

Our Post-16 curriculum has been constructed to provide students with the opportunity to choose a broad and balanced programme. The Post-16 curriculum consists of four parts.

PERSONAL LEARNING	MAIN COURSES	PERSONAL LEARNING GUIDANCE PROGRAMME	OPTIONS
<ul style="list-style-type: none"> • An extended project. • Active Citizenship. • A mfl experience. • Political Literacy. • PSHE Activities • Work experience, work placements and progression planning. • Visit to local universities 	<p>Advanced (Level 3) and Intermediate (Level 2) courses.</p> <p>Full details available at the back of the prospectus.</p>	<p>Higher Education Planning, Employment Related Careers Guidance.</p> <p>Individual tutorial support.</p>	<p>GCSE retakes in Maths and English</p> <p>International Visits.</p> <p>Personal learning enrichment option.</p> <p>Functional Skills in English, Maths and ICT.</p>

PERSONAL LEARNING

Personal Learning is at the heart of the programme of study at Post 16. Students have the opportunity to develop interests in the subject they are studying by completing an Extended Project at either level 2 or 3.

In addition students also take part in citizenship activities and have the opportunity to engage in a huge variety of enrichment activities which have included a visit to the Palace of Westminster, a mock trial competition, a visit to a school in Holland. Students also participate in school drama productions and sporting events, run

clubs and organise trips and visits. All these form part of a students' personalised route through their personal challenge.

There will be a number of international trips: in recent years destinations have included Brussels, Amsterdam and New York.

CURRICULUM ROUTES

Year twelve

4 AS Levels —
 3 AS Levels —
 A Diploma —
 + 2 AS Levels
 Higher diploma (Level 2) —

Year thirteen

3 or 4 A2s
 3 A2s
 A Diploma
 + 1 A Level
 AS Levels

Please note:

- A Higher diploma is a one year (level 2) courses. Students can progress either onto advanced (level 3) courses or employment/training.
- An AS is a one year (level 3) course. It can be continued into the second year to provide the student with a full A Level (A2).
- Students taking level 3 courses who do not have a C grade in English Language, or Maths will be strongly advised to retake them. This is to satisfy Higher Education degree course entry requirements.

All applicants and their parents will be invited to an interview to discuss the application in detail.



STUDENT SUPPORT AND GUIDANCE

A distinctive and important feature of life and learning in the Post-16 centre is the close support and guidance that underpins our tutor system. Students meet their tutors regularly on an individual basis to discuss progress and targets. Tutors maintain an overview of each student's programme and support students in managing their learning.

Three times each year work in each subject is formally reviewed and students have individual tutorials with their subject teachers to set 'next steps'. Tutors also review the student's overall progress and this information is sent home to parents.

There are regular opportunities for parents to meet with tutors and subject staff. In the first year there are evenings set aside for information and questions (usually in September), Subject teachers (December) and Higher Education information (February). In addition there are annual formal reports for each course.



CAREERS EDUCATION AND GUIDANCE

In addition to our careers library and Connexions Young Person's Information Point, we are building a comprehensive range of careers information and advice accessible through the school intranet and website (www.sblonline.org.uk) and the Kingswood Partnership extranet (www.kingswoodonline.org.uk). The school's Employment & Training and Work Experience co-ordinators work closely with tutors and with Connexions, the young person's advisory service. All students can arrange guidance interviews with a Connexions personal advisor.

WORK EXPERIENCE

Post-16 work experience provides a valuable, firsthand insight into the world of work. Successful work experience means that our Post-16 students have more to offer employers and universities. During Year 12 students will be supported and guided through the process of work experience. Students will also have the opportunity to complete longer term work placements.

EMA

Students in the post-16 centre may be eligible for the Education Maintenance Allowance dependant on parental income. Details will be given to all applicants in April.

THE PARTNERSHIP SUBJECTS

In order to provide an even wider range of A Level choices, SBL has for many years been linked with the five other schools and college in this area in a Partnership arrangement. A number of Partnership subjects are taught at SBL, with students from elsewhere joining us.

Further subjects from the Partnership are taught at other institutions; we arrange the necessary transport for SBL students.

Tutors and staff at SBL maintain close links with teachers delivering Partnership subjects elsewhere, and ensure the arrangement offers a high quality, closely monitored course. All institutions involved meet on a regular basis and share common reporting systems. Enrichment activities are offered for students across the schools.

SOCIAL LIFE AND ENRICHMENT

The Post-16 Centre has a strong social tradition. Students have their own forum to represent their views and to organise activities. In recent years these have included Christmas Balls, leaving parties, theatre visits, and many other social events. In the recent past students have raised money for Children in Need and other charities. Post 16 students and staff are presently organising a forth visit to New York.

POST 16 OFSTED REPORT

The Sir Bernard Lovell Post 16 Centre was inspected at the same time as the rest of the school in November 2007.

The inspectors found that:

- The school works extremely well in partnership with other educational providers and the 'Kingswood Partnership' is an outstanding example of 14-19 collaboration.
- The rate of progress and the level of attainment improved in 2007 when compared to the previous year and improvements continue to be made.
- Students enjoy the sixth form and particularly appreciate the way teachers support them and involve them in discussion and debate.
- Leadership and management are good with robust quality assurance arrangements in place to ensure student progress is well monitored.
- The quality and accessibility of information, advice and guidance to enable students to make option and career choices is very good.



POST 16 STUDENT COUNCIL

Students have the opportunity to take part in the Post 16 Student Council which takes issues that Post 16 students see as important to the senior managers of the school and to the Kingswood Partnership. Students on the Post 16 Student Council have recently contributed to the design of the new Post 16 Centre.



The Sir Bernard Lovell School
North Street, Oldland Common, Bristol BS30 8TS

Tel: 01454 868020 Fax: 01454 868014

Email: sbl Lovell@sblonline.org.uk Website: www.sblonline.org.uk